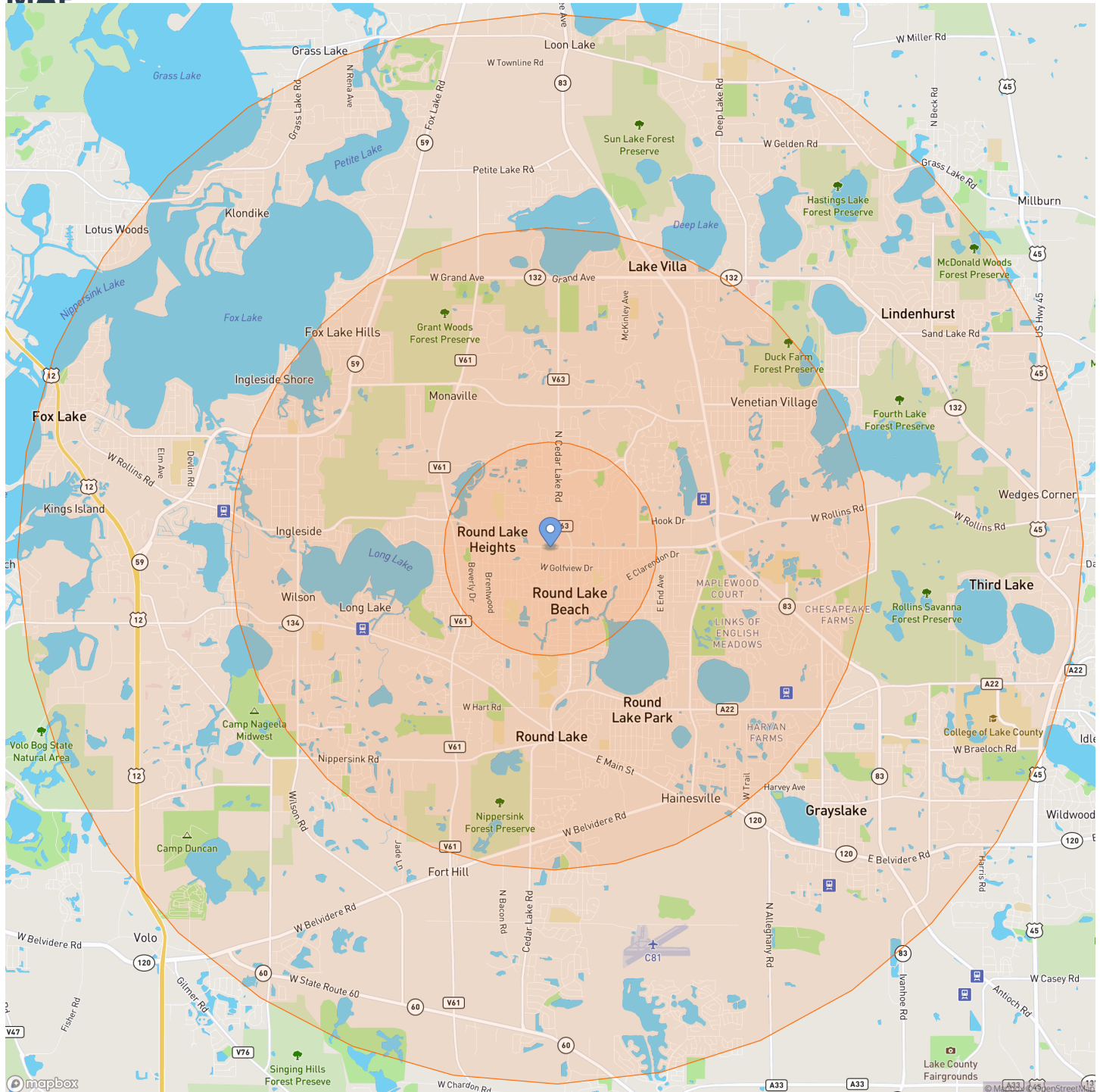


# RADIUS REPORT FOR 1, 3, and 5 miles around Lot 3 w rollins rd, round lake beach, il 60073

PREPARED FOR: Robert Frank

## MAP



# 1, 3, and 5 miles around Lot 3 w rollins rd, round lake beach, il 60073

CITY  
Round Lake Beach

COUNTY  
Lake County

## How many people live here?

1 MI	3 MI	5 MI
<b>17K</b>	<b>73K</b>	<b>135K</b>
CITY: 27K		COUNTY: 712K

## How much money do they make?

1 MI	3 MI	5 MI
<b>\$76K</b>	<b>\$97K</b>	<b>\$101K</b>
CITY: \$87K		COUNTY: \$109K
<i>median household income</i>		

## How old are they?

1 MI	3 MI	5 MI
<b>33</b>	<b>36</b>	<b>37</b>
CITY: 34		COUNTY: 39
<i>median age in years</i>		



# DEMOGRAPHICS

## Population

	1 mile	3 miles	5 miles
<b>Population</b>	16,913	72,581	134,958
<b>Population Density</b> (people per sq mi)	5,553	2,813	1,988

Source: U.S. Census Bureau, 2023 American Community Survey, Tables B01003

## Income

	1 mile		3 miles		5 miles	
<b>Median Household Income</b> (in 2023 inflation adjusted dollars)	\$76,008		\$96,830		\$100,845	
<b>Average Household Income</b> (in 2023 inflation adjusted dollars)	\$98,542		\$115,143		\$119,494	
<b>Families in Poverty</b>	384	10%	1,234	7%	1,881	5%
<b>Households</b>	5,292		24,006		48,315	
Less than \$25,000	665	13%	1,946	8%	4,637	10%
\$25,000 to \$49,999	895	17%	3,147	13%	6,061	13%
\$50,000 to \$74,999	1,048	20%	3,764	16%	7,097	15%
\$75,000 to \$99,999	928	18%	3,602	15%	6,149	13%
\$100,000 to \$199,999	1,387	26%	8,766	37%	17,609	36%
Over \$200,000	368	7%	2,780	12%	6,763	14%

Source: U.S. Census Bureau, 2023 American Community Survey, Tables B19001, B19013, B19025, B17010

## Age

	1 mile		3 miles		5 miles	
<b>Median Age</b>	33		36		37	
<b>Population</b>	16,913		72,581		134,958	
Ages 9 & under	2,308	14%	9,450	13%	17,159	13%
Ages 10 to 19	2,741	16%	11,782	16%	20,179	15%
Ages 20 to 29	2,714	16%	9,796	13%	17,448	13%
Ages 30 to 39	2,569	15%	10,320	14%	18,904	14%
Ages 40 to 49	2,229	13%	10,145	14%	17,526	13%
Ages 50 to 59	1,877	11%	9,548	13%	18,852	14%
Ages 60 to 69	1,366	8%	6,539	9%	13,983	10%
Ages 70 & over	1,107	7%	5,001	7%	10,907	8%

Source: U.S. Census Bureau, 2023 American Community Survey, Tables B01001

## Race & Ethnicity

	1 mile		3 miles		5 miles	
<b>Population</b>	16,913		72,581		134,958	
White	4,712	28%	34,193	47%	77,802	58%
Black	959	6%	3,483	5%	6,321	5%
American Indian	17	0%	53	0%	126	0%
Asian	336	2%	2,904	4%	6,856	5%
Pacific Islander	0	0%	41	0%	50	0%
Other race	207	1%	387	1%	598	0%
Two or more races	315	2%	2,376	3%	4,551	3%
Hispanic or Latino	10,366	61%	29,145	40%	38,654	29%

Source: U.S. Census Bureau, 2023 American Community Survey, Tables B03002

## Educational Attainment

	1 mile		3 miles		5 miles	
<b>Population Aged 25 &amp; Over</b>	10,632		46,331		89,001	
No high school diploma	3,150	30%	7,811	17%	10,086	11%
High school graduate or equal	3,534	33%	13,249	29%	22,400	25%
Some college	1,982	19%	9,494	20%	18,517	21%
Associate's degree	562	5%	3,194	7%	7,000	8%
Bachelor's degree	1,000	9%	8,273	18%	20,382	23%
Advanced degree	405	4%	4,310	9%	10,617	12%

Source: U.S. Census Bureau, 2023 American Community Survey, Tables B15002

## Employment Status

	1 mile		3 miles		5 miles	
<b>Population Aged 16 &amp; Over</b>	12,783		55,736		105,432	
In labor force	9,034	71%	40,446	73%	75,516	72%
Civilian labor force	9,033	71%	40,242	72%	74,994	71%
Employed	8,421	66%	37,263	67%	70,215	67%
Unemployed	612	5%	2,979	5%	4,778	5%
In armed forces	1	0%	204	0%	522	0%
Not in labor force	3,749	29%	15,291	27%	29,917	28%

Source: U.S. Census Bureau, 2023 American Community Survey, Tables B23025

## Households

	1 mile		3 miles		5 miles	
<b>Households</b>	5,292		24,006		48,315	
Family households	3,856	73%	18,125	76%	34,323	71%
Married couples	2,869	54%	13,914	58%	26,999	56%
With kids under 18	1,254	24%	6,469	27%	12,129	25%
Other family types	987	19%	4,210	18%	7,325	15%
Single dad households with kids	215	4%	891	4%	1,382	3%
Single mom households with kids	322	6%	1,441	6%	2,568	5%
Non-family households	1,436	27%	5,881	24%	13,992	29%

Source: U.S. Census Bureau, 2023 American Community Survey, Tables B11001, B11003

## Homes

	1 mile		3 miles		5 miles	
<b>Homes</b>	5,628		25,124		51,050	
Occupied Homes	5,292		24,006		48,315	
Owner occupied units	4,002	76%	19,492	81%	38,218	79%
Renter occupied units	1,289	24%	4,514	19%	10,097	21%

Source: U.S. Census Bureau, 2023 American Community Survey, Tables B25024, B25003

## Housing Unit Value

	1 mile		3 miles		5 miles	
<b>Median Home Value</b>	\$170,585		\$222,638		\$242,540	
<b>Owner Occupied Homes</b>	4,002		19,492		38,218	
Under \$100,000	264	7%	1,492	8%	2,058	5%
\$100,000 to \$199,999	2,633	66%	6,448	33%	10,359	27%
\$200,000 to \$299,999	890	22%	7,233	37%	14,680	38%
\$300,000 to \$399,999	132	3%	3,047	16%	7,185	19%
\$400,000 to \$499,999	27	1%	862	4%	2,627	7%
\$500,000 to \$749,999	25	1%	249	1%	1,023	3%
\$750,000 to \$999,999	1	0%	103	1%	187	0%
\$1,000,000 to \$1,499,999	20	0%	29	0%	71	0%
\$1,500,000 to \$1,999,999	8	0%	14	0%	14	0%
Over \$2,000,000	1	0%	13	0%	13	0%

Source: U.S. Census Bureau, 2023 American Community Survey, Tables B25075

## Detailed Age

	1 mile		3 miles		5 miles	
Population	16,913		72,581		134,958	
<b>Male:</b>	9,029	53%	37,279	51%	68,531	51%
Under 5 years	550	3%	2,183	3%	4,192	3%
5 to 9 years	841	5%	2,982	4%	4,970	4%
10 to 14 years	808	5%	2,891	4%	5,090	4%
15 to 17 years	451	3%	2,099	3%	3,494	3%
18 and 19 years	258	2%	929	1%	1,791	1%
20 years	134	1%	496	1%	929	1%
21 years	136	1%	468	1%	845	1%
22 to 24 years	448	3%	1,505	2%	2,581	2%
25 to 29 years	699	4%	2,641	4%	4,640	3%
30 to 34 years	602	4%	2,163	3%	4,329	3%
35 to 39 years	730	4%	3,141	4%	5,420	4%
40 to 44 years	537	3%	2,256	3%	4,101	3%
45 to 49 years	594	4%	2,670	4%	4,496	3%
50 to 54 years	633	4%	2,667	4%	5,129	4%
55 to 59 years	520	3%	2,568	4%	4,606	3%
60 and 61 years	136	1%	1,119	2%	2,040	2%
62 to 64 years	184	1%	959	1%	1,943	1%
65 and 66 years	190	1%	588	1%	1,257	1%
67 to 69 years	111	1%	729	1%	1,853	1%
70 to 74 years	198	1%	910	1%	2,006	1%
75 to 79 years	122	1%	662	1%	1,477	1%
80 to 84 years	118	1%	432	1%	840	1%
85 years and over	29	0%	222	0%	503	0%
<b>Female:</b>	7,883	47%	35,302	49%	66,427	49%
Under 5 years	538	3%	2,220	3%	3,909	3%
5 to 9 years	379	2%	2,066	3%	4,088	3%
10 to 14 years	738	4%	3,252	4%	5,204	4%
15 to 17 years	307	2%	1,680	2%	2,900	2%
18 and 19 years	179	1%	930	1%	1,700	1%
20 years	64	0%	347	0%	547	0%
21 years	80	0%	460	1%	843	1%
22 to 24 years	370	2%	1,742	2%	2,873	2%
25 to 29 years	783	5%	2,138	3%	4,190	3%
30 to 34 years	537	3%	1,999	3%	3,997	3%
35 to 39 years	701	4%	3,018	4%	5,157	4%
40 to 44 years	398	2%	2,515	3%	4,378	3%
45 to 49 years	700	4%	2,704	4%	4,551	3%
50 to 54 years	284	2%	2,159	3%	4,359	3%
55 to 59 years	440	3%	2,153	3%	4,758	4%
60 and 61 years	113	1%	709	1%	1,557	1%
62 to 64 years	274	2%	1,124	2%	2,256	2%
65 and 66 years	178	1%	557	1%	1,272	1%
67 to 69 years	180	1%	755	1%	1,805	1%
70 to 74 years	169	1%	973	1%	2,549	2%
75 to 79 years	185	1%	854	1%	1,756	1%
80 to 84 years	159	1%	622	1%	1,039	1%
85 years and over	128	1%	325	0%	737	1%

Source: U.S. Census Bureau, 2023 American Community Survey, Tables B01001, B01003. The numbers in the above table may not total up due to rounding.

# POPULATION PROJECTIONS

State and county population projections.

Geography	2010 - 2020	2020 - 2030 Projected	Is Projected To:
Illinois	<p><b>0%</b></p> <p>12,830,632 - 12,812,508</p>	<p><b>0%</b></p> <p>12,812,508 - 12,775,248</p>	Remain Stable
Lake County	<p><b>2%</b></p> <p>703,462 - 714,342</p>	<p><b>6%</b></p> <p>714,342 - 755,333</p>	Grow

Source: Illinois Department of Public Health, Office of Policy, Planning and Statistics, Population Projections for Illinois Counties: 2020 to 2035. May 2024.  
 U.S. Census Bureau, Decennial Censuses 2010, and 2020.

# Methodology

## RADIUS ESTIMATES

---

First, we subtract the 2023 US Census Bureau's water areas from the 2023 block groups. Then we calculate the project's radiuses, the block groups minus water areas that intersect the radiuses, and the percent of each block group's area that's in the radiuses (overlap). Next, the overlap percent is multiplied by the Census demographics for each block group. Finally, we sum the overlap times the demographics for all block groups that intersect a radius to produce the demographic estimate for the radius.

The benefits of this methodology are that it allows for:

1. the use of the **most current data** for small area geographies from the US Census Bureau;
2. the estimation of demographics for radius distances using dissimilar shaped Census block groups;
3. **data comparability** (because estimates for small radiuses and large radiuses use the same methodology, geographies and datasets); and
4. improved estimates along coastlines and large water bodies by removing water areas.

This methodology assumes that the **population is equally distributed** throughout a block group. This assumption can result in unlikely estimates for small radiuses (i.e. 1 mile) in rural areas with low population densities and thus, large geographic area block groups.

## MEDIAN ESTIMATES

---

To estimate median values, we use a simple method explained in the book "Beginning Statistics: An Introduction for Social Scientists" by Diamond I and Jefferies J. Here's how it works:

1. We pull grouped data for your area of interest and order the groups from smallest to largest. This helps us see which group the middle value, or median, is in.
2. We figure out exactly where the middle value sits within its group. We look at how far into the group it is, as a percentage, starting from the bottom end.
3. Then, we check how big the gap is between the smallest and largest numbers in that group.
4. We use the percentage to find a part of that gap. This percentage tells us how much to add to the smallest number in the group to get the median.

If you have any questions, you can reach Cubit at 1.800.939.2130 or at [www.cubitplanning.com](http://www.cubitplanning.com).

### CUBIT

Prepared by Cubit  
6800 West Gate Blvd. Ste. 132-366  
Austin, TX 78745-4648  
[www.cubitplanning.com](http://www.cubitplanning.com)  
1.800.939.2130