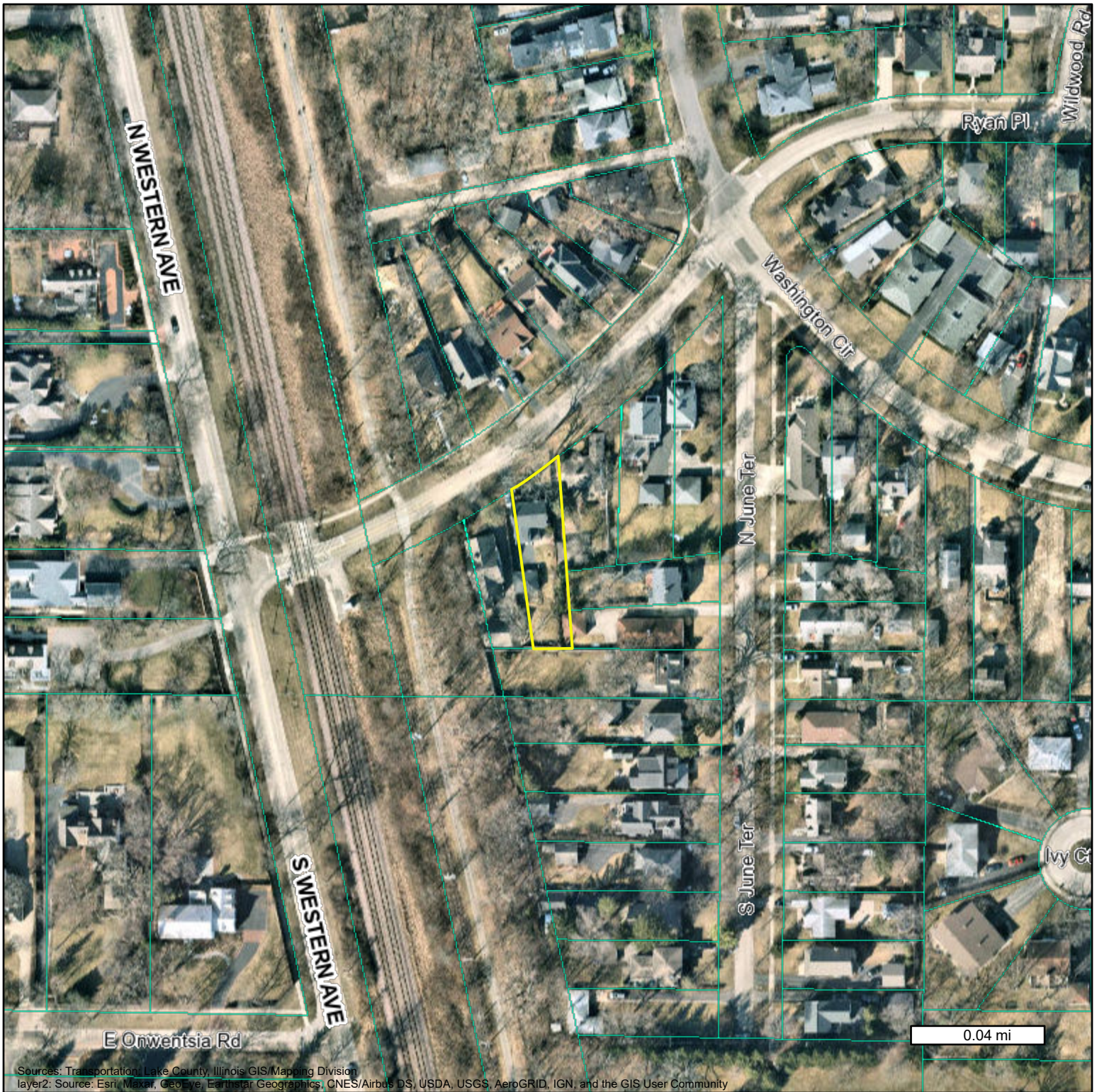
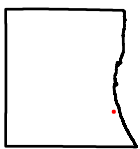



# 495 Ryan, Lake Forest - Aerial






Lake County, Illinois



Map Printed on 3/10/2022



<p><span style="color: yellow;">■</span> Override 1</p> <p><b>Landmark Points</b></p> <p><b>Feature Code</b></p> <ul style="list-style-type: none"> <li> Airport Runway / Airfield</li> <li> Amusement / Water Park</li> <li> Auditorium / Concert Hall / Theater / Opera House</li> <li> Brewery / Distillery / Winery</li> </ul>	<ul style="list-style-type: none"> <li> Bus Station / Dispatch Facility</li> <li> Campground</li> <li> Cemetery</li> <li> Coast Guard</li> <li> College / University</li> <li> Commercial or Retail Facility</li> <li> Community / Recreation Center</li> </ul>	<ul style="list-style-type: none"> <li> Corporate Headquarters</li> <li> County Government Facility</li> <li> Court House</li> <li> DoD / Military Facility</li> <li> Education Facility</li> <li> Emergency Response or Law Enforcement Facility</li> </ul>	<ul style="list-style-type: none"> <li> Fair / Exhibition / Rodeo Grounds</li> <li> Farm / Ranch</li> <li> Fire Station / EMS Station</li> <li> Gas Station</li> <li> Golf Course</li> <li> Helipad / Helipoint / Helispot</li> <li> Historic Site / Point of Interest</li> </ul>	<ul style="list-style-type: none"> <li> Hospital / Medical Center</li> <li> Hotel / Motel</li> <li> House of Worship</li> <li> Ice Arena</li> <li> Industrial Facility</li> <li> Law Enforcement</li> <li> Library</li> <li> Marina</li> <li> Municipal Government Facility</li> <li> Museum</li> <li> Nursing Home / Long Term Care</li> <li> Office of Emergency Management</li> <li> Outdoor Theater / Amphitheater</li> <li> Outpatient Clinic</li> <li> Park</li> </ul>
--	---	--	---	--

**Disclaimer:** The selected feature may not occur anywhere in the current map extent. A Registered Land Surveyor should be consulted to determine the precise location of property boundaries on the ground. This map does not constitute a regulatory determination and is not a base for engineering design. This map is intended to be viewed and printed in color.