

FINAL PLAT OF SUBDIVISION ROLLINS CENTER

GENERAL CONDITIONS
(ARTS 1, 2 AND 3)

THE UNDERSIGNED, NOT PROVIDING ANY GUARANTEE OF ACCURACY, HAS PREPARED THIS PLAT OF SUBDIVISION FOR THE CITY OF ROLLINS, FLORIDA, AND HAS BEEN DULY QUALIFIED BY THE FLORIDA BOARD OF PROFESSIONAL ENGINEERS AND SURVEYORS TO PREPARE AND RECORD THIS PLAT OF SUBDIVISION IN ACCORDANCE WITH THE FLORIDA STATUTES.

DATED THIS 28th DAY OF MAY, 2012, AT ROLLINS, FLORIDA.

[Signature]
Robert E. Frank, III
Professional Engineer and Surveyor
No. 12450

ADDITIONAL CONDITIONS
(ARTS 4, 5, 6 AND 7)

1. THE UNDERSIGNED HAS CONDUCTED A VISUAL INSPECTION OF THE PROPERTY AND HAS FOUND THAT THE PROPERTY IS AS SHOWN ON THIS PLAT OF SUBDIVISION. THE UNDERSIGNED HAS NOT CONDUCTED A SURVEY OF THE PROPERTY AND HAS NOT BEEN DULY QUALIFIED TO CONDUCT SUCH A SURVEY.

2. THE UNDERSIGNED HAS CONDUCTED A VISUAL INSPECTION OF THE PROPERTY AND HAS FOUND THAT THE PROPERTY IS AS SHOWN ON THIS PLAT OF SUBDIVISION. THE UNDERSIGNED HAS NOT CONDUCTED A SURVEY OF THE PROPERTY AND HAS NOT BEEN DULY QUALIFIED TO CONDUCT SUCH A SURVEY.

GENERAL CONDITIONS
(ARTS 1, 2 AND 3)

THE UNDERSIGNED, NOT PROVIDING ANY GUARANTEE OF ACCURACY, HAS PREPARED THIS PLAT OF SUBDIVISION FOR THE CITY OF ROLLINS, FLORIDA, AND HAS BEEN DULY QUALIFIED BY THE FLORIDA BOARD OF PROFESSIONAL ENGINEERS AND SURVEYORS TO PREPARE AND RECORD THIS PLAT OF SUBDIVISION IN ACCORDANCE WITH THE FLORIDA STATUTES.

ADDITIONAL CONDITIONS
(ARTS 4, 5, 6 AND 7)

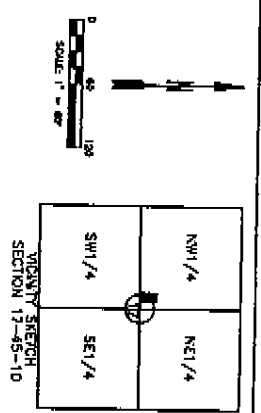
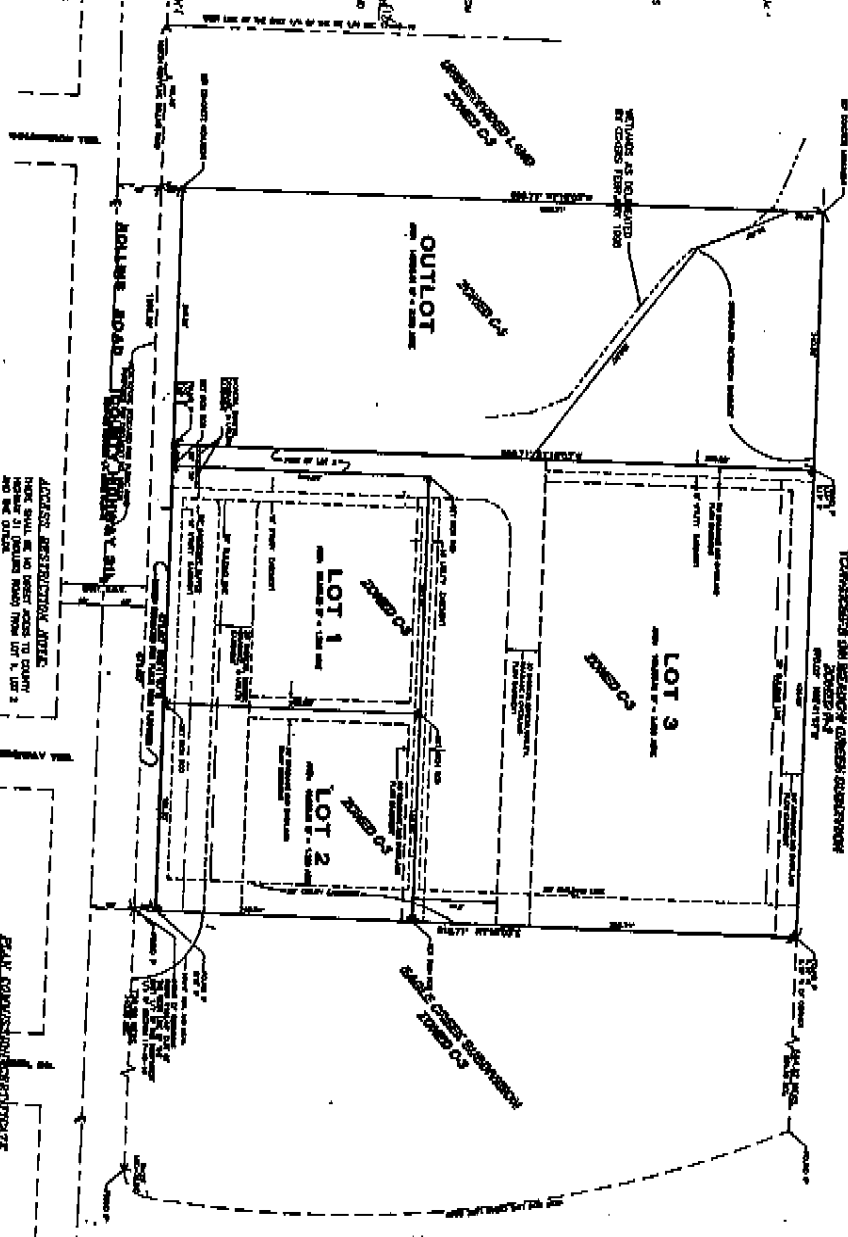
1. THE UNDERSIGNED HAS CONDUCTED A VISUAL INSPECTION OF THE PROPERTY AND HAS FOUND THAT THE PROPERTY IS AS SHOWN ON THIS PLAT OF SUBDIVISION. THE UNDERSIGNED HAS NOT CONDUCTED A SURVEY OF THE PROPERTY AND HAS NOT BEEN DULY QUALIFIED TO CONDUCT SUCH A SURVEY.

GENERAL CONDITIONS
(ARTS 1, 2 AND 3)

THE UNDERSIGNED, NOT PROVIDING ANY GUARANTEE OF ACCURACY, HAS PREPARED THIS PLAT OF SUBDIVISION FOR THE CITY OF ROLLINS, FLORIDA, AND HAS BEEN DULY QUALIFIED BY THE FLORIDA BOARD OF PROFESSIONAL ENGINEERS AND SURVEYORS TO PREPARE AND RECORD THIS PLAT OF SUBDIVISION IN ACCORDANCE WITH THE FLORIDA STATUTES.

ADDITIONAL CONDITIONS OF PART OF THE AGREEMENT SIGNED BY THE CITY OF ROLLINS, FLORIDA, AND THE UNDERSIGNED, NOT PROVIDING ANY GUARANTEE OF ACCURACY, HAS PREPARED THIS PLAT OF SUBDIVISION IN ACCORDANCE WITH THE FLORIDA STATUTES.

1. THE UNDERSIGNED HAS CONDUCTED A VISUAL INSPECTION OF THE PROPERTY AND HAS FOUND THAT THE PROPERTY IS AS SHOWN ON THIS PLAT OF SUBDIVISION. THE UNDERSIGNED HAS NOT CONDUCTED A SURVEY OF THE PROPERTY AND HAS NOT BEEN DULY QUALIFIED TO CONDUCT SUCH A SURVEY.



GENERAL CONDITIONS
(ARTS 1, 2 AND 3)

THE UNDERSIGNED, NOT PROVIDING ANY GUARANTEE OF ACCURACY, HAS PREPARED THIS PLAT OF SUBDIVISION FOR THE CITY OF ROLLINS, FLORIDA, AND HAS BEEN DULY QUALIFIED BY THE FLORIDA BOARD OF PROFESSIONAL ENGINEERS AND SURVEYORS TO PREPARE AND RECORD THIS PLAT OF SUBDIVISION IN ACCORDANCE WITH THE FLORIDA STATUTES.

ADDITIONAL CONDITIONS
(ARTS 4, 5, 6 AND 7)

1. THE UNDERSIGNED HAS CONDUCTED A VISUAL INSPECTION OF THE PROPERTY AND HAS FOUND THAT THE PROPERTY IS AS SHOWN ON THIS PLAT OF SUBDIVISION. THE UNDERSIGNED HAS NOT CONDUCTED A SURVEY OF THE PROPERTY AND HAS NOT BEEN DULY QUALIFIED TO CONDUCT SUCH A SURVEY.

GENERAL CONDITIONS
(ARTS 1, 2 AND 3)

THE UNDERSIGNED, NOT PROVIDING ANY GUARANTEE OF ACCURACY, HAS PREPARED THIS PLAT OF SUBDIVISION FOR THE CITY OF ROLLINS, FLORIDA, AND HAS BEEN DULY QUALIFIED BY THE FLORIDA BOARD OF PROFESSIONAL ENGINEERS AND SURVEYORS TO PREPARE AND RECORD THIS PLAT OF SUBDIVISION IN ACCORDANCE WITH THE FLORIDA STATUTES.

GENERAL CONDITIONS
(ARTS 1, 2 AND 3)

THE UNDERSIGNED, NOT PROVIDING ANY GUARANTEE OF ACCURACY, HAS PREPARED THIS PLAT OF SUBDIVISION FOR THE CITY OF ROLLINS, FLORIDA, AND HAS BEEN DULY QUALIFIED BY THE FLORIDA BOARD OF PROFESSIONAL ENGINEERS AND SURVEYORS TO PREPARE AND RECORD THIS PLAT OF SUBDIVISION IN ACCORDANCE WITH THE FLORIDA STATUTES.

REVISIONS	
NO.	DATE
1	05-11-12
2	05-23-12

McCLURE ENGINEERING ASSOCIATES, INC.
2210 Wood Avenue
Tallahassee, Florida 32304
TEL: 904-536-7000 FAX: 904-536-7001

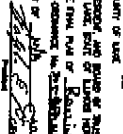
SCALE	1" = 50'
DRAWN BY	RF
CHECKED BY	RF
DATE	05-23-12

FINAL SUBDIVISION PLAT
ROLLINS CENTER

ROLLINS, FLORIDA

RECORD BOOK: 2012-0001

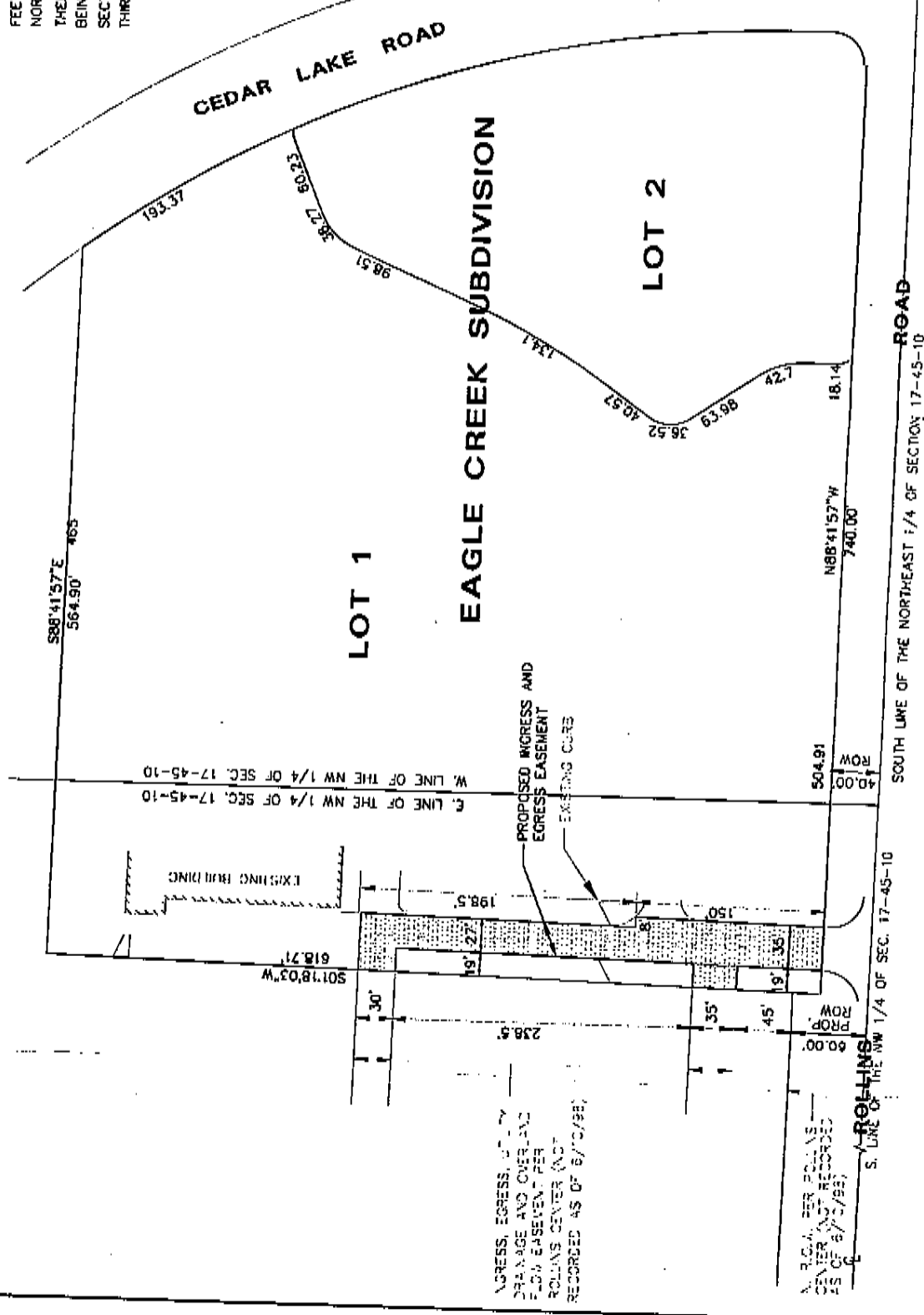
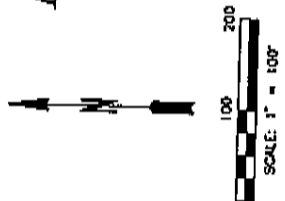
FILE NO: 12-45-10



PLAT OF EASEMENT

FOR
INGRESS AND EGRESS
FOR THE BENEFIT OF
ROLLINS CENTER

THE SOUTHERLY 348.5 FEET OF THE WESTERLY 54 FEET, EXCEPT THE EASTERLY 8 FEET OF THE NORTHERLY 198.5 FEET THEREOF, ALSO EXCEPT THE WESTERLY 19 FEET OF THE SOUTHERLY 45 FEET THEREOF ALSO EXCEPT THE WESTERLY 19 FEET OF THE NORTHERLY 238.5 FEET OF THE SOUTHERLY 318.5 FEET THEREOF, OF LOT 1 IN EAGLE CREEK SUBDIVISION BEING A SUBDIVISION OF PART OF THE NORTH 1/2 OF SECTION 17, TOWNSHIP 45 NORTH, RANGE 10 EAST OF THE THIRD PRINCIPLE MERIDIAN, IN LAKE COUNTY, ILLINOIS.



STATE OF ILLINOIS), S.S.
COUNTY OF LAKE)

I, HARLAN M. DOLAND, AN ILLINOIS REGISTERED PROFESSIONAL LAND SURVEYOR WITH MCCLURE ENGINEERING ASSOCIATES, INC. DO HEREBY CERTIFY THAT THE EASEMENT PLAT SHOWN HEREON HAS BEEN PREPARED, UNDER MY DIRECT SUPERVISION, FROM EXISTING PLATS AND RECORDS AND IS A CORRECT REPRESENTATION OF THE EASEMENT DESCRIBED ABOVE.

DATED AT WAUKEGAN, ILLINOIS OF

THIS 16th DAY OF June, 1998 A.D.

[Signature]
ILLINOIS REGISTERED PROFESSIONAL LAND SURVEYOR
No. 35-3121



INGRESS, EGRESS, UTILITY DRAINAGE AND OVERLAP EASEMENT FOR ROLLINS CENTER (NOT RECORDED AS OF 6/7/98)

ROLLINS CENTER POLYLINE CENTER WAS RECORDED AS OF 6/7/98

SOUTH LINE OF THE NORTHEAST 1/4 OF SECTION 17-45-10

DATE	1998
BY	MCCLURE ENGINEERING ASSOCIATES, INC.
FOR	ROLLINS CENTER

MCCLURE ENGINEERING ASSOCIATES, INC.
1118 East County Waukegan, Illinois 60087
TEL: 815-491-7100 FAX: 815-491-7104

DATE	6/16/98
BY	MCCLURE ENGINEERING ASSOCIATES, INC.
FOR	ROLLINS CENTER

PLAT OF EASEMENT
ROLLINS ROAD SUBDIVISION
SECTION 17, TOWNSHIP 45 NORTH, RANGE 10 EAST OF THE THIRD PRINCIPLE MERIDIAN, IN LAKE COUNTY, ILLINOIS