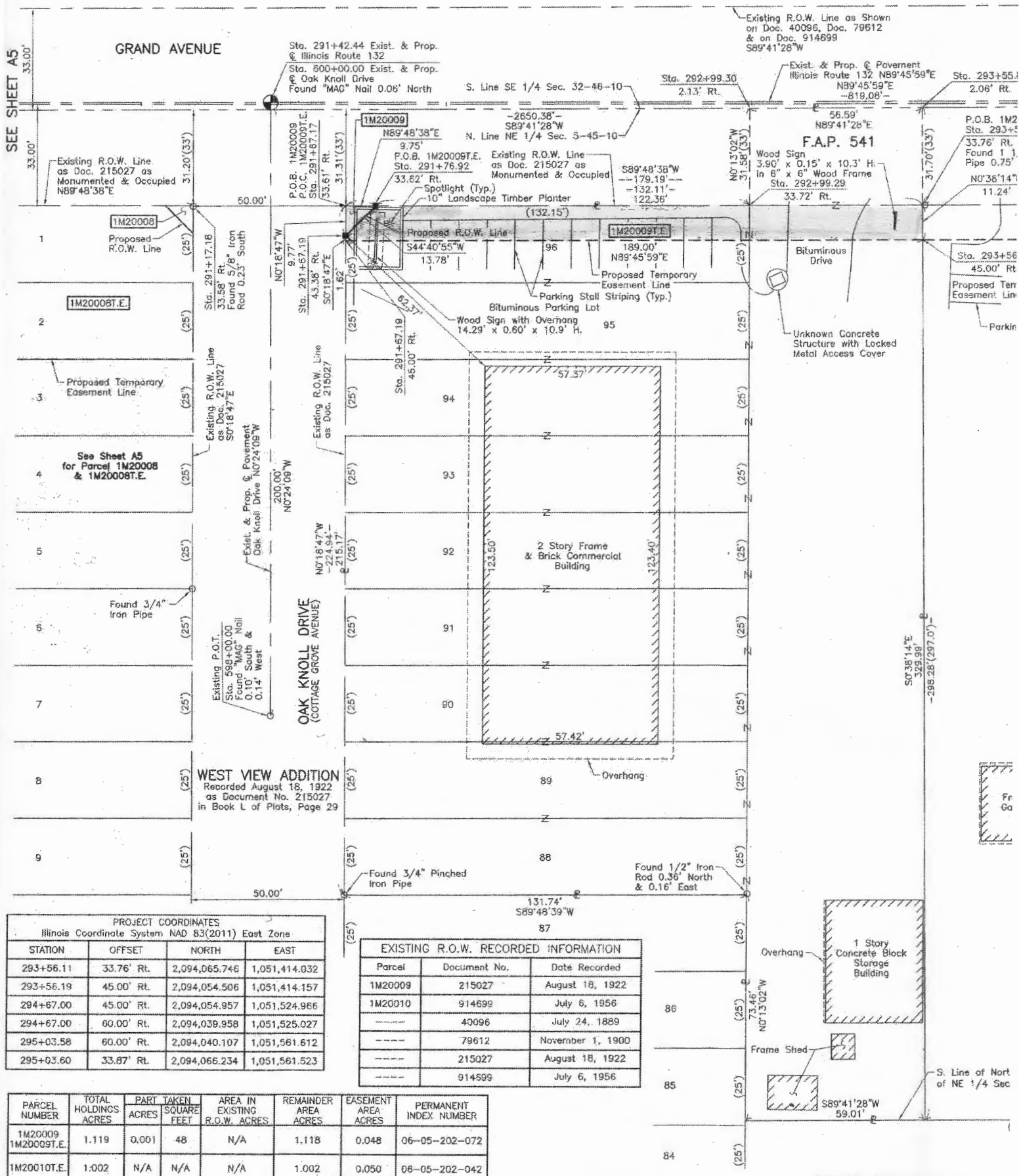


See Sheet A4
for Parcel
1M20006

SEE SHEET A4

1M20006



Existing R.O.W. Line as Shown on Doc. 40096, Doc. 79612 & on Doc. 914699 S89°41'28"W

F.A.P. 541

SEE SHEET A5

GRAND AVENUE

Sta. 291+42.44 Exist. & Prop. Illinois Route 132
Sta. 500+00.00 Exist. & Prop. Oak Knoll Drive Found "MAG" Nail 0.06' North

Sta. 292+99.30
2.13' Rt.

Exist. & Prop. of Pavement Illinois Route 132 N89°45'59"E
N89°45'59"E
-819.08'

Sta. 293+55.1
2.06' Rt.

Existing R.O.W. Line as Doc. 215027 as Monumented & Occupied N89°48'38"E

P.O.B. 1M20009
P.O.C. 1M20009T.E.
Sta. 291+67.17
33.61' Rt.
31.31' (33')

1M20009
N89°48'38"E
9.75'
P.O.B. 1M20009T.E.
Sta. 291+76.92
33.82' Rt.
Spotlight (Typ.)
10" Landscape Timber Planter
(132.15')

2.650.38'
S89°41'28"W
N. Line NE 1/4 Sec. 5-45-10

58.59'
N89°41'28"E
Wood Sign
3.90' x 0.15' x 10.3' H.
in 6" x 6" Wood Frame
Sta. 292+99.29
33.72' Rt.

P.O.B. 1M20009T.E.
Sta. 293+56.11
33.76' Rt.
Found 1.1" Pipe 0.75'
N0°36'14"W
11.24'

1M20008
Proposed R.O.W. Line

1M20008T.E.

Proposed Temporary Easement Line

See Sheet A5 for Parcel 1M20008 & 1M20008T.E.

Found 3/4" Iron Pipe

WEST VIEW ADDITION
Recorded August 18, 1922 as Document No. 215027 in Book L of Plots, Page 29

Sta. 291+17.18
33.58' Rt.
Found 5/8" Iron Red 0.25' South

Sta. 291+67.19
43.38' Rt.
S0°18'47"E

Sta. 291+67.18
45.00' Rt.

Sta. 291+67.17
22.19' -
2.215.17'

Existing R.O.W. Line as Doc. 215027 as Monumented & Occupied
S89°48'38"W
-179.19'
-132.11'
-122.36'

Proposed R.O.W. Line
S44°40'55"W
13.78'

Proposed Temporary Easement Line
N89°45'59"E
189.00'

Proposed R.O.W. Line
N0°18'47"W
-224.94' -
2.215.17'

Proposed Temporary Easement Line
N0°13'02"W
31.58' (33')

Bituminous Drive
Unknown Concrete Structure with Locked Metal Access Cover

Proposed Temporary Easement Line
N0°13'02"W
31.58' (33')

Proposed Temporary Easement Line
S0°38'14"E
329.99'
-286.28' (297.0')

PROJECT COORDINATES			
Illinois Coordinate System NAD 83(2011) East Zone			
STATION	OFFSET	NORTH	EAST
293+56.11	33.76' Rt.	2,094,065.746	1,051,414.032
293+56.19	45.00' Rt.	2,094,054.506	1,051,414.157
294+67.00	45.00' Rt.	2,094,054.957	1,051,524.966
294+67.00	60.00' Rt.	2,094,039.958	1,051,525.027
295+03.58	60.00' Rt.	2,094,040.107	1,051,561.612
295+03.60	33.87' Rt.	2,094,066.234	1,051,561.523

EXISTING R.O.W. RECORDED INFORMATION		
Parcel	Document No.	Date Recorded
1M20009	215027	August 18, 1922
1M20010	914699	July 6, 1956
----	40096	July 24, 1889
----	79612	November 1, 1900
----	215027	August 18, 1922
----	914699	July 6, 1956

PARCEL NUMBER	TOTAL HOLDINGS ACRES	PART TAKEN ACRES	SQUARE FEET	AREA IN EXISTING R.O.W. ACRES	REMAINDER AREA ACRES	EASEMENT AREA ACRES	PERMANENT INDEX NUMBER
1M20009 1M20009T.E.	1.119	0.001	48	N/A	1.118	0.048	06-05-202-072
1M20010T.E.	1.002	N/A	N/A	N/A	1.002	0.050	06-05-202-042