



ROBERT E. FRANK
OWNER / MANAGING BROKER
847-508-5263



Industrial CONDO FOR LEASE ASKING \$1,895/MO

**888 E. BELVIDERE RD., UNIT 410
GRAYSLAKE, IL 60030**

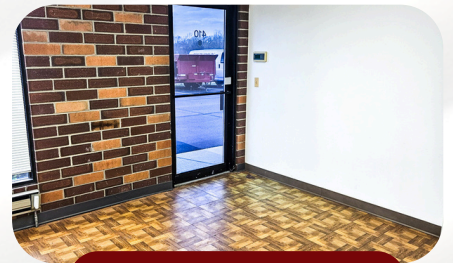


ABOUT PROPERTY

Grayslake industrial condo with 1925 square feet and 10x10 overhead garage door. Upgrades include newer HVAC and Central air system, Three Phase power, double steel doors in several rooms, existing partitions can be removed to create clear span space. Ample parking. Uses allowed in the LI zoning include pharmaceutical, machine shop, plastics manufacturing, exterminator, equipment rental, beverage distribution, etc...Great for small business looking to get out of home garage! Long term tenant recently vacated. Available immediately. Join hundreds of Grayslake businesses at 888 E Belvidere Industrial Complex. On lock box for easy access.

FEATURES

- Approx. 1,925 sq. ft.
- \$11.81 SF/YR
- Zoned LI
- 10 x 10 Overhead Door
- 3 Phase Power
- Ample Parking
- Many Potential Uses
- Avail Immediately



WELCOME!



10X10 OHD



LARGE ROOM

- 📞 847-356-LAND
- 📍 P.O. BOX 1111, LAKE VILLA, IL 60046
- 🌐 WWW.ROBERTEFRANKREALESTATE.COM
- ✉ ROBERTEFRANKREALESTATE@GMAIL.COM