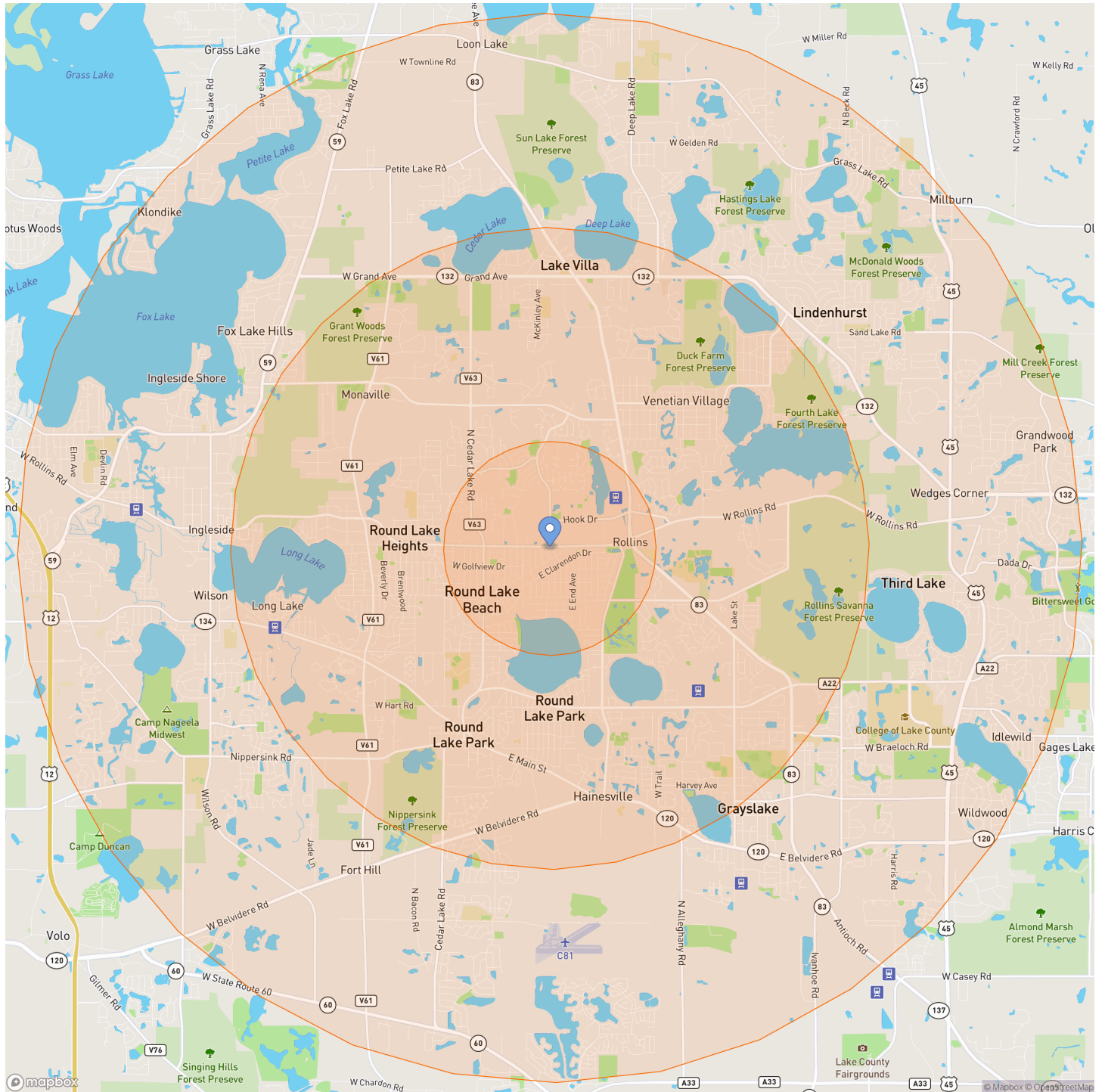


RADIUS REPORT FOR 1, 3, and 5 miles around 131 E Rollins Rd., Round Lake Beach, IL 60073

PREPARED FOR: Robert Frank
DATE: October 14, 2024

MAP



1, 3, and 5 miles around 131 E Rollins Rd., Round Lake Beach, IL 60073

CITY
Round Lake Beach village, Illinois

COUNTY
Lake County, Illinois

How many people live here?

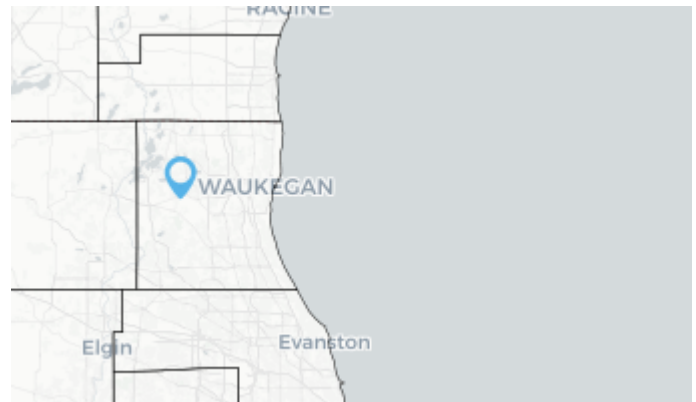
1 MI	3 MI	5 MI
14K	71K	142K
CITY: 27K		COUNTY: 713K

How much money do they make?

1 MI	3 MI	5 MI
\$87K	\$94K	\$99K
CITY: \$83K		COUNTY: \$105K
<i>median household income</i>		

How old are they?

1 MI	3 MI	5 MI
33	35	37
CITY: 33		COUNTY: 39
<i>median age in years</i>		



DEMOGRAPHICS

Population

	1 mile	3 miles	5 miles
Population	13,673	71,287	141,699
Population Density (people per sq mi)	4,712	2,796	2,038

Source: U.S. Census Bureau, 2022 American Community Survey, Tables B01003

Income

	1 mile		3 miles		5 miles	
Median Household Income (in 2022 inflation adjusted dollars)	\$87,461		\$93,871		\$99,383	
Mean Household Income (in 2022 inflation adjusted dollars)	\$102,289		\$111,983		\$119,863	
Families in Poverty	263	8%	1,190	7%	1,993	6%
Households	4,047		23,508		49,605	
Less than \$25,000	351	9%	2,221	9%	4,827	10%
\$25,000 to \$49,999	713	18%	3,375	14%	6,525	13%
\$50,000 to \$74,999	657	16%	3,630	15%	7,092	14%
\$75,000 to \$99,999	609	15%	3,348	14%	6,519	13%
\$100,000 to \$199,999	1,422	35%	8,201	35%	17,330	35%
\$200,000 or more	297	7%	2,733	12%	7,312	15%

Source: U.S. Census Bureau, 2022 American Community Survey, Tables B19001, B19013, B19025, B17010

Age

	1 mile		3 miles		5 miles	
Median Age	33		35		37	
Population	13,673		71,287		141,699	
9 & under	1,759	13%	9,042	13%	18,136	13%
10 to 19	2,519	18%	11,512	16%	21,495	15%
20 to 29	2,040	15%	10,388	15%	18,393	13%
30 to 39	2,129	16%	9,691	14%	18,876	13%
40 to 49	1,911	14%	9,656	14%	19,042	13%
50 to 59	1,512	11%	9,488	13%	20,375	14%
60 to 69	852	6%	6,485	9%	14,242	10%
70 & over	950	7%	5,026	7%	11,139	8%

Source: U.S. Census Bureau, 2022 American Community Survey, Tables B01001

Race & Ethnicity

	1 mile		3 miles		5 miles	
Population	13,673		71,287		141,699	
White	5,308	39%	36,203	51%	84,357	60%
Black	457	3%	3,673	5%	6,756	5%
American Indian	10	0%	65	0%	131	0%
Asian	214	2%	2,711	4%	8,277	6%
Pacific Islander	0	0%	84	0%	85	0%
Other race	51	0%	330	0%	585	0%
Two or more races	200	1%	1,927	3%	4,114	3%
Hispanic	7,434	54%	26,293	37%	37,393	26%

Source: U.S. Census Bureau, 2022 American Community Survey, Tables B03002

Educational Attainment

	1 mile		3 miles		5 miles	
Population 25 years & Over	8,415		45,106		92,453	
No high school diploma	1,923	23%	7,091	16%	9,701	10%
High school graduate or equal	3,036	36%	12,553	28%	22,588	24%
Some college	1,723	20%	8,988	20%	19,130	21%
Associate's degree	558	7%	3,125	7%	7,031	8%
Bachelor's degree	797	9%	8,490	19%	22,177	24%
Masters, doctorate, professional	378	4%	4,860	11%	11,826	13%

Source: U.S. Census Bureau, 2022 American Community Survey, Tables B15002

Employment Status

	1 mile		3 miles		5 miles	
Population 16 years & Over	10,405		55,185		110,433	
In labor force	7,356	71%	39,707	72%	79,104	72%
Civilian labor force	7,353	71%	39,539	72%	78,522	71%
Employed	6,902	66%	36,848	67%	73,741	67%
Unemployed	451	4%	2,692	5%	4,781	4%
In armed forces	4	0%	168	0%	582	1%
Not in labor force	3,049	29%	15,478	28%	31,328	28%

Source: U.S. Census Bureau, 2022 American Community Survey, Tables B23025

Households

	1 mile		3 miles		5 miles	
Households	4,047		23,508		49,605	
Family households	3,204	79%	17,675	75%	36,084	73%
Married couple family	2,384	59%	13,525	58%	28,858	58%
With own children under 18	1,141	28%	6,244	27%	12,963	26%
Other family	819	20%	4,150	18%	7,226	15%
Single male householder with own children under 18	271	7%	757	3%	1,171	2%
Single female householder with own children under 18	333	8%	1,613	7%	2,858	6%
Nonfamily households	844	21%	5,833	25%	13,521	27%

Source: U.S. Census Bureau, 2022 American Community Survey, Tables B11001, B11003

Housing Units

	1 mile		3 miles		5 miles	
Housing Units	4,351		24,587		52,165	
Occupied Housing Units	4,047		23,508		49,605	
Owner occupied units	3,297	81%	18,616	79%	39,506	80%
Renter occupied units	750	19%	4,892	21%	10,099	20%

Source: U.S. Census Bureau, 2022 American Community Survey, Tables B25024, B25003

Housing Unit Value

	1 mile		3 miles		5 miles	
Median Home Value	\$175,378		\$211,968		\$235,789	
Owner Occupied Housing Units	3,297		18,616		39,506	
Less than \$100,000	260	8%	1,534	8%	2,168	5%
\$100,000 to \$199,999	1,738	53%	6,863	37%	11,632	29%
\$200,000 to \$299,999	992	30%	6,507	35%	14,664	37%
\$300,000 to \$399,999	236	7%	2,588	14%	7,049	18%
\$400,000 to \$499,999	22	1%	770	4%	2,683	7%
\$500,000 to \$749,999	20	1%	182	1%	976	2%
\$750,000 to \$999,999	15	0%	141	1%	253	1%
\$1,000,000 to \$1,499,999	14	0%	15	0%	41	0%
\$1,500,000 to \$1,999,999	0	0%	9	0%	12	0%
\$2,000,000 or more	0	0%	7	0%	28	0%

Source: U.S. Census Bureau, 2022 American Community Survey, Tables B25075




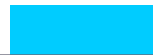
Detailed Age

	1 mile		3 miles		5 miles	
Population	13,673		71,287		141,699	
Male:	7,526	55%	37,038	52%	72,080	51%
Under 5 years	508	4%	2,136	3%	4,370	3%
5 to 9 years	599	4%	2,846	4%	5,059	4%
10 to 14 years	601	4%	2,812	4%	5,583	4%
15 to 17 years	513	4%	2,212	3%	3,833	3%
18 and 19 years	272	2%	1,198	2%	1,906	1%
20 years	60	0%	624	1%	1,019	1%
21 years	139	1%	622	1%	1,118	1%
22 to 24 years	400	3%	1,814	3%	2,987	2%
25 to 29 years	550	4%	2,528	4%	4,600	3%
30 to 34 years	399	3%	2,117	3%	4,247	3%
35 to 39 years	749	5%	2,849	4%	5,429	4%
40 to 44 years	419	3%	2,318	3%	4,547	3%
45 to 49 years	594	4%	2,489	3%	4,766	3%
50 to 54 years	515	4%	2,537	4%	5,357	4%
55 to 59 years	358	3%	2,449	3%	5,084	4%
60 and 61 years	103	1%	1,064	1%	2,292	2%
62 to 64 years	126	1%	978	1%	1,908	1%
65 and 66 years	123	1%	480	1%	1,263	1%
67 to 69 years	116	1%	780	1%	1,906	1%
70 to 74 years	152	1%	935	1%	2,122	1%
75 to 79 years	119	1%	633	1%	1,363	1%
80 to 84 years	98	1%	360	1%	691	0%
85 years and over	14	0%	256	0%	631	0%
Female:	6,147	45%	34,249	48%	69,619	49%
Under 5 years	367	3%	2,197	3%	4,183	3%
5 to 9 years	284	2%	1,863	3%	4,524	3%
10 to 14 years	686	5%	2,996	4%	5,338	4%
15 to 17 years	289	2%	1,414	2%	2,914	2%
18 and 19 years	158	1%	879	1%	1,923	1%
20 years	88	1%	375	1%	731	1%
21 years	48	0%	444	1%	747	1%
22 to 24 years	245	2%	1,748	2%	3,013	2%
25 to 29 years	510	4%	2,233	3%	4,178	3%
30 to 34 years	451	3%	2,235	3%	4,384	3%
35 to 39 years	530	4%	2,490	3%	4,817	3%
40 to 44 years	319	2%	2,253	3%	4,694	3%
45 to 49 years	580	4%	2,596	4%	5,035	4%
50 to 54 years	291	2%	2,276	3%	4,872	3%
55 to 59 years	348	3%	2,226	3%	5,063	4%
60 and 61 years	62	0%	796	1%	1,695	1%
62 to 64 years	151	1%	1,198	2%	2,197	2%
65 and 66 years	37	0%	505	1%	1,256	1%
67 to 69 years	136	1%	685	1%	1,725	1%
70 to 74 years	227	2%	1,074	2%	2,695	2%
75 to 79 years	163	1%	787	1%	1,696	1%
80 to 84 years	87	1%	581	1%	1,013	1%
85 years and over	90	1%	401	1%	927	1%

Source: U.S. Census Bureau, 2022 American Community Survey, Tables B01001, B01003. The numbers in the above table may not total up due to rounding.

POPULATION PROJECTIONS

State and county population projections.

	2000	2010	2020	2030	% Population Change			% Population Change 2020-2030
					2000-2010	2010-2020	2020-2030	
Illinois	12,419,293	12,830,632	12,812,508	12,790,000				0%
Lake County	644,356	703,462	714,342	795,649				11%

Source: Illinois Department of Public Health, Office of Policy, Planning and Statistics, Population Projections for Illinois Counties: 2010 to 2030. April 2021.
 U.S. Census Bureau, Decennial Censuses 2000, 2010, and 2020.

Methodology

RADIUS ESTIMATES

First, we subtract the 2022 US Census Bureau's water areas from the 2022 block groups. Then we calculate the project's radiuses, the block groups minus water areas that intersect the radiuses, and the percent of each block group's area that's in the radiuses (overlap). Next, the overlap percent is multiplied by the Census demographics for each block group. Finally, we sum the overlap times the demographics for all block groups that intersect a radius to produce the demographic estimate for the radius.

The benefits of this methodology are that it allows for:

1. the use of the **most current data** for small area geographies from the US Census Bureau;
2. the estimation of demographics for radius distances using dissimilar shaped Census block groups;
3. **data comparability** (because estimates for small radiuses and large radiuses use the same methodology, geographies and datasets); and
4. improved estimates along coastlines and large water bodies by removing water areas.

This methodology assumes that the **population is equally distributed** throughout a block group. This assumption can result in unlikely estimates for small radiuses (i.e. 1 mile) in rural areas with low population densities and thus, large geographic area block groups.

MEDIAN ESTIMATES

To estimate median values, we use a simple method explained in the book "Beginning Statistics: An Introduction for Social Scientists" by Diamond I and Jefferies J. Here's how it works:

1. We pull grouped data for your area of interest and order the groups from smallest to largest. This helps us see which group the middle value, or median, is in.
2. We figure out exactly where the middle value sits within its group. We look at how far into the group it is, as a percentage, starting from the bottom end.
3. Then, we check how big the gap is between the smallest and largest numbers in that group.
4. We use the percentage to find a part of that gap. This percentage tells us how much to add to the smallest number in the group to get the median.

If you have any questions, you can reach Cubit at 1.800.939.2130 or at www.cubitplanning.com.

CUBIT

Prepared by Cubit
6800 West Gate Blvd. Ste. 132-366
Austin, TX 78745-4648
www.cubitplanning.com
1.800.939.2130